

Beacon Südtirol - Alto Adige

Michele Tais – Provincia Autonoma di Bolzano

Stefano Seppi – IDM – Ecosystem & Automation

May 2018



AUTONOME
PROVINZ
BOZEN
SÜDTIROL



PROVINCIA
AUTONOMA
DI BOLZANO
ALTO ADIGE

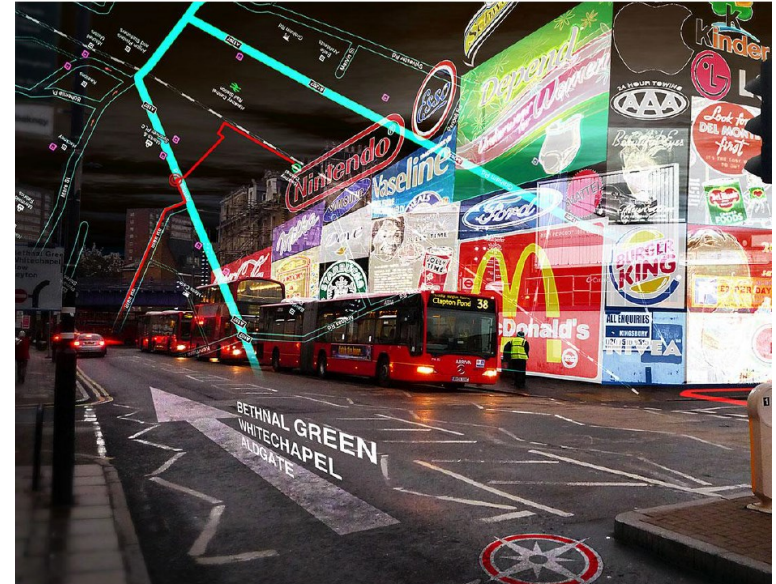


Vision



Cheap and Fast Internet worldwide

Augmented Reality



State of the art

ONYPX BEACON

1000 beacon devices produced by Onyx Beacon were placed on the buses, but also in the bus stops


The beacons detect App users who are within a bus stop or in a bus, and deliver useful contextual information.

This project is developed by Raiffeisen Online, a division of Raiffeisen Bank and regional partner of Onyx Beacon in Northern Italy and Austria.



SASA Beacons

Merano real time [Feedback](#)

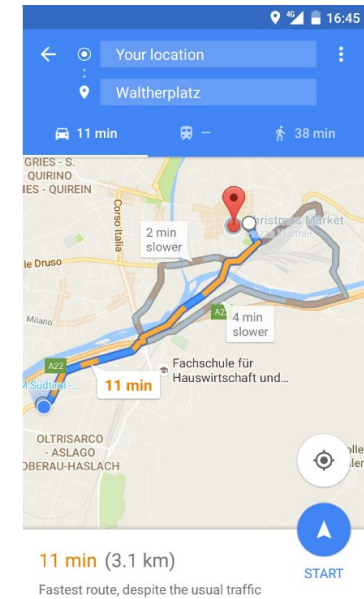
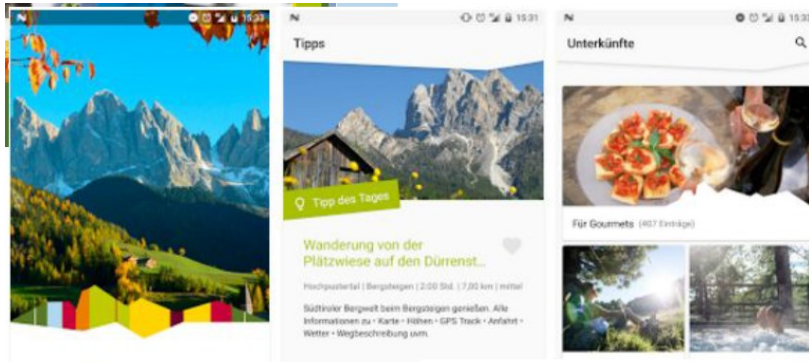


Urban	Extraurbani	
✓ 183	✓ 201	✓ 1
✓ 3	✓ 5	✓ 6
✓ 8	✓ 9	✓ 11
✓ 12	✓ 14	✓ 7A
✓ 7B	✓ 10A	✓ 10B
✓ 153		

Open Data/Open Source

State of the art

Südtirol App – Suedtirool.info



Amazon Echo

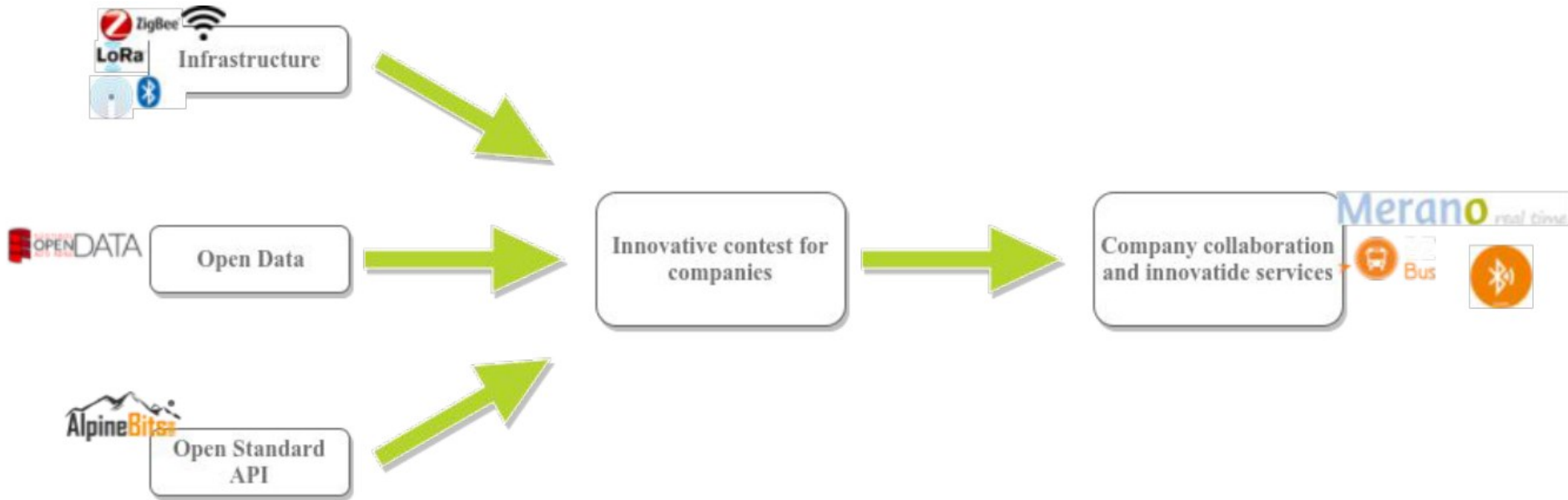
amazon echo

Always ready, connected, and fast. Just ask.



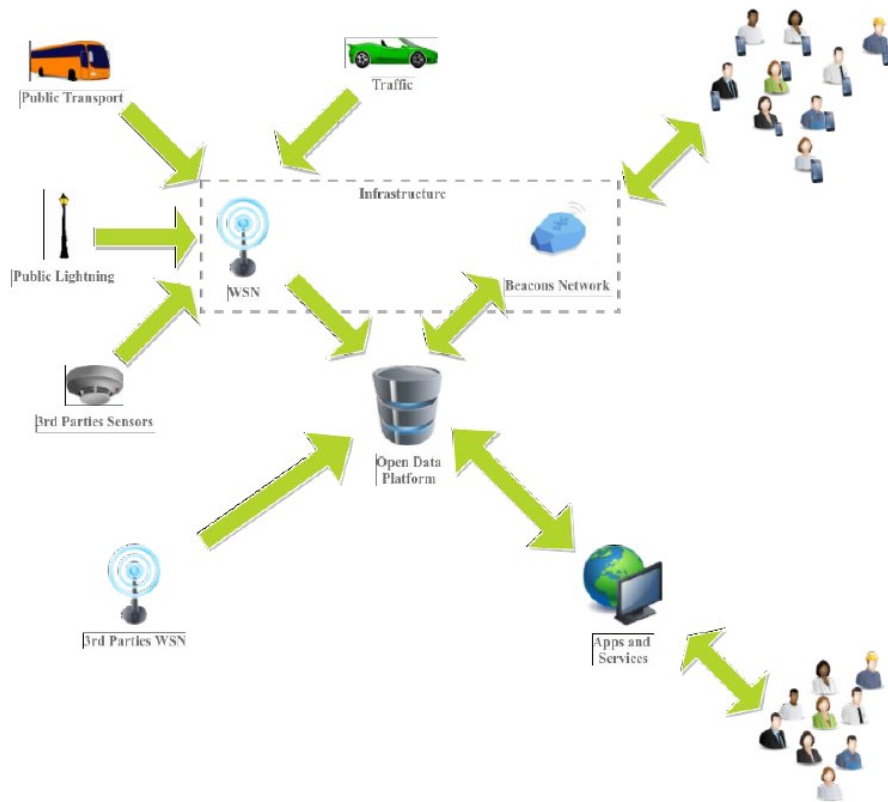
Google Maps

Needs



- **Infrastructure** for data collection
- Well documented **APIs** for simplified interoperability
- Publishing of **Open Data** for innovative services on the market and in the public sector

General Architecture



The main components of the system are:

- the **Beacon Network** which allows the provision of geo-referenced services through mobile apps ;
- the **WSN** which allows the collection of data from different sensor typologies (eg. busses, cars, etc...);
- the **Open Data Platform** which stores the data and provides it through well defined **Open Standard APIs**;
- the **3rd parties WSN** which can be connected with the Open Data Platform through well defined Open Standard APIs;
- the **Apps and Services** developed by both public administration and private companies, used by the local users and the tourist.

Project Plan

	2018												2019							
	1	2	3	4	5	6	7	8	9	10	11	12	1	2	3	4	5	6	7	8
	M5	M6	M7	M8	M9	M10	M11	M12	M13	M14	M15	M16	M17	M18	M19	M20	M21	M22	M23	M24
WP 1 - Project Management																				
Task 1.1 - Project management																				
WP 2 - Communication and community building																				
Task 2.1 - Creation of a community of experts and companies																				
Task 2.2 - Management of the community																				
Task 2.3 - Dissemination activities																				
WP 3 - State of the art analysis																				
Task 3.1 - IoT tecnologia state of the art Analysis																				
Task 3.2 - Southtyrolean stakeholder active in IoT field																				
Task 3.3 - Southtyrolean stakeholder which will benefit from IoT																				
Task 3.4 - Southtyrolean past, present and future initiatives in IoT field																				
Task 3.5 - Redaction of a southtyrolean vision paper about IoT																				
WP 4 - Beacon network																				
Task 4.1 - POIs identification																				
Task 4.2 - Supplier identification																				
Task 4.3 - Setup of the Beacon Network																				
Task 4.4 - Setup of the maintenance system																				
Task 4.5 - Web service development																				
Task 4.6 - Maintenance of the Beacon network																				
Task 4.7 - Technology evaluation and follow-up activities definition																				
WP 5 - WSN network																				
Task 5.1 - Technology and pilot areas identification																				
Task 5.2 - Identification of one or more suppliers																				
Task 5.3 - Setup of the WSN																				
Task 5.4 - Setup of the maintenance system																				
Task 5.5 - Web service development																				
Task 5.6 - Maintenance of the WSN network																				
Task 5.7 - Technology evaluation and follow-up activities definition																				
WP 6 - Pilots implementation																				
Task 6.1 - Pilots identification																				
Task 6.2 - Pilots Implementation																				

KICK OFF-MEETING

Save the Date

08/06/2018 - 09:00-13:00



TECHPARK SÜDTIROL / ALTO ADIGE

- Project Presentation
- Introduction to Beacon and WSN
- Use Cases and Best Practises
- Discussion and Feedbacks



Thank you for your attention

Michele Tais

michele.tais@provincia.bz.it

Stefano Seppi

stefano.seppi@idm-suedtirol.com



AUTONOME
PROVINZ
BOZEN
SÜDTIROL



PROVINCIA
AUTONOMA
DI BOLZANO
ALTO ADIGE

